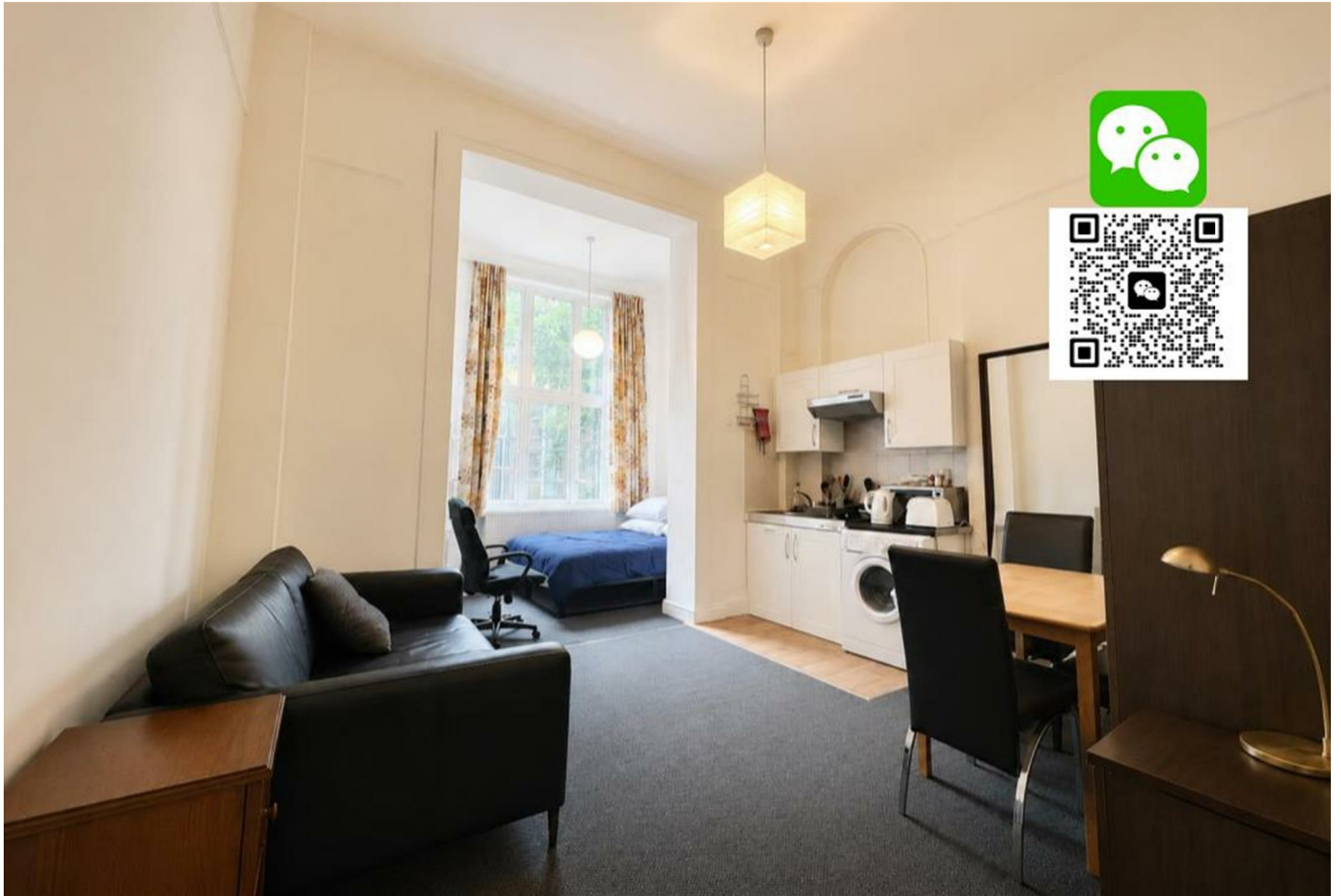


pomp

properties



Cromwell Road, Gloucester Road
£450 Per Week



A spacious first floor mezzanine double studio flat, conveniently located near Earls Court Underground Station. This delightful flat is suitable for either an individual or a couple, offering comfort and convenience in one.

Recently refurbished with stunning wooden floors throughout, this studio boasts ample storage space for all your needs. It features a newly fitted kitchen equipped with a washing machine, allowing for convenient laundry facilities. Additionally, the studio offers the luxury of a private bathroom, providing a sense of exclusivity.

The rent includes heating and council tax, ensuring a hassle-free living experience.

